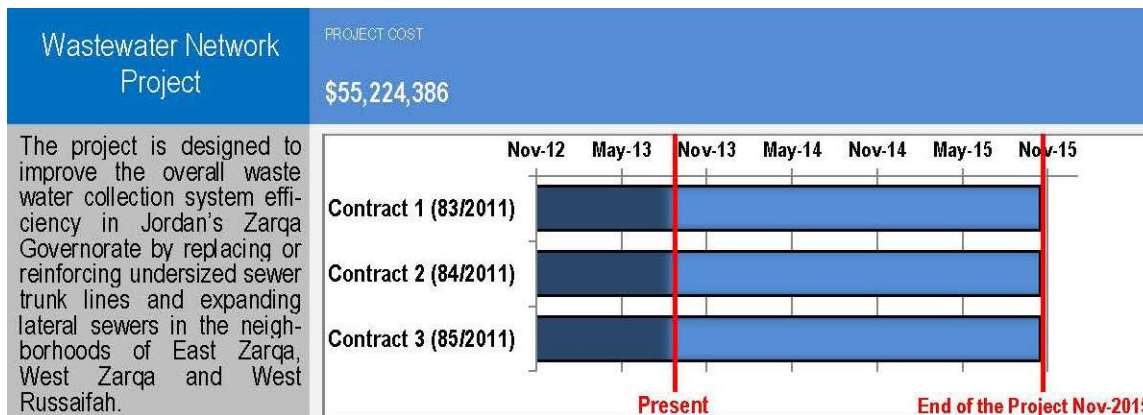




**MILLENNIUM**  
CHALLENGE ACCOUNT - JORDAN  
Partners in Development



## PROJECTED RESULTS BY END OF COMPACT

The extension of lateral sewer lines is expected to raise wastewater collection coverage rates from 72 percent to about 82 percent of the local population, reduce incidents of sewage overflow and capture more water for treatment

## PROGRESS TO DATE

Approximately 37% of originally Contract works are constructed. MCA-J is working with the contractor to add more networks to the con-tracts to serve more people. Identified cost saving in the works will also provide additional pipes in underserved areas

## PROJECT ACHIEVEMENTS

Public and worker health and safety and environmental conditions are being introduced into the utility construction market in Jordan. Social engagement of the community has helped the implementing entities to garnish support for the project. Nearly 20 km of network will be ready for handing over and commissioning by the end of 2013. Based on successful tendering of the water contracts, most of the optional items of work and new applications for service can be added to the project because of additional contingency budgets becoming available for use.

## Projected Long-Term Results (Up to 20 years)

ESTIMATED BENEFICIARIES: 2,023,000

ESTIMATED IN-CREASE IN HOUSE-HOLD INCOME: \$602,500,000